



Cite this: DOI: 10.1039/c9an01880h

Clinical blood sampling for oxylipin analysis – effect of storage and pneumatic tube transport of blood on free and total oxylipin profile in human plasma and serum†

Katharina M. Rund,^a Fabian Nolte,^a Julian Doricic,^b Robert Greite,^b Sebastian Schott,^b Ralf Lichtinghagen,^c Faikah Gueler^b and Nils Helge Schebb *^a

Quantitative analysis of oxylipins in blood samples is of increasing interest in clinical studies. However, storage after sampling and transport of blood might induce artificial changes in the apparent oxylipin profile due to *ex vivo* formation/degradation by autoxidation or enzymatic activity. In the present study we investigated the stability of free (*i.e.* non-esterified) and total oxylipins in EDTA-plasma and serum generated under clinical conditions assessing delays in sample processing and automated transportation: Free cytochrome P450 monooxygenase and 5-lipoxygenase (LOX) formed oxylipins as well as autoxidation products were marginally affected by storage of whole blood up to 4 h at 4 °C, while total (*i.e.* the sum of free and esterified) levels of these oxylipins were stable up to 24 h and following transport. Cyclooxygenase (COX) products (TxB₂, 12-HHT) and 12-LOX derived hydroxy-fatty acids were prone to storage and transport induced changes due to platelet activation. Total oxylipin patterns were generally more stable than the concentration of free oxylipins. In serum, coagulation induced higher levels of COX and 12-LOX products showing a high inter-individual variability. Overall, our results indicate that total EDTA-plasma oxylipins are the most stable blood oxylipin marker for clinical samples. Here, storage of blood before further processing is acceptable for a period up to 24 hours at 4 °C. However, levels of platelet derived oxylipins should be interpreted with caution regarding potential *ex vivo* formation.

Received 22nd September 2019,
Accepted 28th January 2020

DOI: 10.1039/c9an01880h

rs.c.li/analyst

1. Introduction

Oxygenated polyunsaturated fatty acids (PUFA), *i.e.* eicosanoids and other oxylipins, are highly potent endogenous mediators of physiological and pathophysiological processes including regulation of endothelial function, blood pressure, thrombosis and inflammation.^{1–4}

Oxylipins are formed endogenously by conversion of PUFA *via* three major enzymatic pathways as well as non-enzymatic autoxidation leading to a multitude of oxygenated products from different PUFA precursors such as arachidonic acid (C20:4 n6), eicosapentaenoic acid (EPA, C20:5 n3) and docosahexaenoic acid (DHA, C22:6 n3): (I) conversion by cyclooxygenases (COX) results in formation of prostanoids and throm-

boxanes; (II) lipoxygenases (LOX) convert PUFA to regio- and stereoselective hydroperoxy-PUFA which can be reduced to hydroxy-PUFA or further converted to leukotrienes or multiple hydroxylated PUFA; and (III) action of cytochrome P450 monooxygenases (CYP) leads to formation of hydroxylated PUFA and epoxy-PUFA whereby the latter can be further hydrolyzed to vicinal dihydroxy-PUFA by soluble epoxide hydrolases.^{1,5,6} Besides regio- and stereoselective conversion by these enzymes, non-enzymatic radical mediated autoxidation gives rise to structurally similar oxygenated products with diverse regio- and stereochemistry such as isoprostanooids (IsoP), hydroxy-PUFA and epoxy-PUFA which also possess biological activity.^{7–10}

Dysregulation of oxylipin formation is implicated among others in cardiovascular, immune or metabolic diseases^{11,12} and several pharmaceuticals act by modulating the oxylipin profile (*e.g.* non-steroidal anti-inflammatory drugs, anti-thrombotic drugs, the asthma drug zileuton).^{13–15} Considering the multitude and diversity of oxylipins as well as the different pathways involved in oxylipin formation the overall physiological effect might result rather from the general profile than from the levels of a single oxylipin.^{16,17} Therefore, comprehen-

^aChair of Food Chemistry, Faculty of Mathematics and Natural Sciences, University of Wuppertal, Wuppertal, Germany. E-mail: schebb@uni-wuppertal.de; Tel: +49 202-439-3457

^bNephrology, Hannover Medical School, Hannover, Germany

^cInstitute of Laboratory Medicine, Hannover Medical School, Hannover, Germany

† Electronic supplementary information (ESI) available. See DOI: 10.1039/c9an01880h



sive and reliable quantification of the oxylipin pattern may be valuable to evaluate the disease state or monitor the action of drugs.

For clinical diagnostics blood specimen, *i.e.* plasma or serum, are the most widely used biofluids reflecting the systemic condition of the donor. In blood, oxylipins occur in their free form, are associated with proteins, such as albumin,^{18,19} however the major part (>90%) – particularly hydroxy- and epoxy-PUFA as well as isoprostanooids – is esterified in cellular lipids (*i.e.* in blood cells) and in lipoproteins.^{20–22}

Endogenous factors, such as sex,²³ age,²⁴ physical exercise,^{25,26} health status,²⁷ intake of drugs^{13,15,28} or diet^{17,29} as well as variation in expression or genetic polymorphisms in enzymes^{30–33} impact the oxylipin profile of an individual. Moreover exogenous, pre-analytical factors relevant during collection, processing and storage of samples until analysis affect the oxylipin pattern,⁵ thus complicating its reliable interpretation.

In hospitals clinical blood samples are usually collected on a ward or in the emergency unit and are afterwards transported from the phlebotomy site to the clinical chemistry laboratory *via* transport systems such as pneumatic tube system transport (PTS) where centrifugation and generation of plasma or serum takes place.

The oxylipin pattern and its information about the physiology of the patient strongly depend upon the choice between serum or plasma during blood withdrawal. During serum generation the blood coagulation cascade is triggered which includes activation of platelets resulting in a massive increase of platelet derived oxylipins such as 12-LOX metabolites and thromboxanes.^{34,35} For plasma different anticoagulants during blood collection, such as EDTA, heparin or citrate are used. The type of anticoagulant affects the formation of oxylipins, particularly hydroxy-PUFA and platelet derived oxylipins (12-LOX and COX derived products).^{34,36} Therefore, blood sampling, *i.e.* the choice of the blood specimen, has to be carefully considered in clinical studies with respect to the analytes of interest and standardized within studies.

Following blood withdrawal, temperature and transitory storage time as well as transport to the clinical chemistry laboratory such as pneumatic tube system transport (PTS), are relevant pre-analytical factors which are hard to control in a clinical setting. Few studies investigated the influence of duration and temperature during whole blood storage prior further processing and revealed changes for some free, *i.e.* non-esterified oxylipins in the generated plasma especially after longer times (>30 min) at elevated temperatures (room temperature, RT).^{16,34,37} However, no data about the influence of typical sample handling in the clinic on the oxylipin pattern exist. This is especially necessary to evaluate the suitability and reliability of the oxylipin pattern in blood samples from clinical studies, as well as in samples collected from patients in emergency or intensive care units or from biobanks. Moreover, these data are an essential prerequisite to deduce the physiological role of changes in the oxylipin pattern in

clinical studies as well as their suitability as biomarkers for disease.

In the present study we therefore investigated the impact of storage of blood samples for different time periods at 4 °C after collection, as well as the transfer from the ward to the clinical chemistry laboratory within a large hospital using PTS prior to the removal of cells (plasma or serum generation). For all conditions, levels of both, free and total oxylipins, *i.e.* after alkaline hydrolysis, were determined in EDTA-plasma and serum to evaluate if free or total oxylipins are more stable in plasma or serum. In order to deduce pathway specific effects a comprehensive set of oxylipins covering representative analytes derived from ARA, EPA and DHA from COX, LOX, CYP as well as non-enzymatic conversion was analyzed.

2. Experimental

2.1 Chemicals

Oxylipin and deuterated oxylipin standards were purchased from Cayman Chemicals (local distributor: Biomol, Hamburg, Germany). LC-MS-grade methanol (MeOH), LC-MS-grade acetonitrile (ACN), LC-MS-grade isopropanol, LC-MS-grade acetic acid were obtained from Fisher Scientific (Schwerte, Germany). Sodium acetate trihydrate, sodium hydrogen phosphate and *n*-hexane (HPLC grade) were obtained from Carl Roth (Karlsruhe, Germany) and potassium hydroxide (KOH, 85%) from Gruessing GmbH (Filsulm, Germany). 2-(1-Thienyl)ethyl 3,4-dihydroxybenzylideneacyanoacetate (2-TEDC) was obtained from Santa Cruz. Ethyl acetate, phenylmethylsulfonyl fluoride (PMSF) and all other chemicals were purchased from Sigma Aldrich (Schnellendorf, Germany).

2.2 Blood sampling and pre-analytical procedures

Venous blood samples were collected from 6 individual volunteers (4 females and 2 males, 23–56 years) by venipuncture in EDTA-monovettes (Sarstedt, Nümbrecht, Germany) and serum monovettes (Sarstedt, Nümbrecht, Germany). Blood was collected at 10 am and no dietary restrictions were given. Each individual had breakfast before the blood sampling.

From each individual plasma and serum samples were generated by centrifugation (4 °C, 10 min, 1844g, Thermo Scientific, Heraeus, Multifuge 3SR+) at 4 time points as described below and illustrated in Fig. 1: immediate, after 4 hours at 4 °C, after 24 hours at 4 °C and after pneumatic tube system transport (PTS) from the hospital ward to the clinical chemistry laboratory. For basal levels (*t*₀) one plasma and serum monovette from each individual was centrifuged about 15 min after blood sampling. The supernatant, *i.e.* plasma or serum, was transferred to a cryotube and stored at –80 °C until analysis. To investigate the influence of storage on oxylipins, blood samples were maintained for about 30 min at room temperature reflecting the time blood sampling takes on a hospital ward. Afterwards monovettes from each individual were stored at 4 °C in the fridge for 4 hours or 24 hours until further processing to generate plasma or serum as



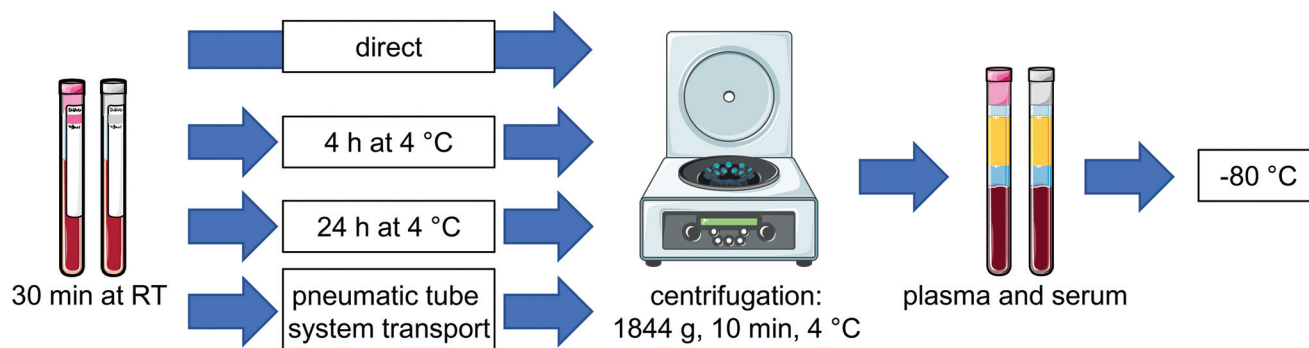


Fig. 1 Schematic overview of the blood handling after sampling before centrifugation and storage at $-80\text{ }^{\circ}\text{C}$. Blood samples from healthy volunteers were taken in EDTA- or serum monovettes, stored for 30 min at room temperature (RT) and plasma or serum was generated at 4 different time points: directly, after storage for 4 h or 24 h at $4\text{ }^{\circ}\text{C}$ or after pneumatic tube system transport. For each condition samples were centrifuged, plasma or serum was separated and stored at $-80\text{ }^{\circ}\text{C}$.

described above. After 30 min of storage at room temperature an additional monovette was transferred by the PTS to the clinical chemistry laboratory where plasma and serum were generated in an analogous manner (ESI Fig. S1†). The pneumatic tube transport system of the Hannover Medical School comprises about 50 km pipe distance and works in suction operation. PTS transport of the samples ranged between 2 to 17 min. Overall samples sent *via* the PTS stayed approx. 1.5 to 3 h at room temperature until storage at $-80\text{ }^{\circ}\text{C}$.

All procedures were conducted according to the guidelines laid down in the Declaration of Helsinki and approved by the ethic committee of the Hannover Medical School (MHH ethical approval 6895) and all volunteers gave their written informed consent.

To characterize effects on the sample state levels of lactate dehydrogenase (LDH) were determined in plasma samples from an additional sample set generated in an analogous manner using an Olympus analyzer (AU400) in an automated fashion according to the manufacturer's instruction (ESI Fig. S2†).

2.3 Extraction and quantification of oxylipins

Free oxylipins as well as total, *i.e.* free and esterified oxylipins were extracted from individual plasma and serum samples using anion exchange Bond Elut Certify II SPE cartridges (200 mg, 3 mL, Agilent, Waldbronn, Germany) as described with modifications.³⁸

Analysis of free oxylipins was carried out as described.³⁹ In brief, to 500 μL plasma or serum 10 μL antioxidant solution (0.2 mg mL^{-1} BHT and EDTA, 100 μM cyclooxygenase inhibitor indomethacin, 100 μM of the soluble epoxide hydrolase inhibitor *trans*-4-[4-(3-adamantan-1-yl-ureido)-cyclohexyloxy]-benzoic acid (*t*-AUCB) in MeOH/water (50/50, v/v)), 10 μL of 250 mM protease inhibitor PMSF in isopropanol, 10 μL of 100 μM LOX inhibitor 2-TEDC in MeOH and 10 μL of an internal standard (IS) solution (containing 100 nM of $^2\text{H}_4$ -6-keto-PGF_{1 α} , $^2\text{H}_4$ -15-F_{2t}-IsoP, $^2\text{H}_{11}$ -5(*R,S*)-5-F_{2t}-IsoP, $^2\text{H}_4$ -PGE₂, $^2\text{H}_4$ -PGD₂, $^2\text{H}_4$ -TxB₂, $^2\text{H}_4$ -LTB₄, $^2\text{H}_4$ -9,10-DiHOME, $^2\text{H}_{11}$ -14,15-

DiHETrE, $^2\text{H}_4$ -9-HODE, $^2\text{H}_8$ -5-HETE, $^2\text{H}_8$ -12-HETE, $^2\text{H}_6$ -20-HETE, $^2\text{H}_4$ -9(10)-EpOME, $^2\text{H}_{11}$ -14(15)-EpETrE) were added. Samples were diluted with 1 mL 1 M sodium acetate (pH 6, water/MeOH 95/5 v/v) and loaded on the preconditioned SPE cartridge.

Total, *i.e.* free and esterified oxylipins were extracted from 100 μL plasma or serum as described with slight modifications.⁴⁰ After addition of 10 μL antioxidant solution and 10 μL IS solution, 400 μL isopropanol was added and samples were stored for 30 min at $-80\text{ }^{\circ}\text{C}$ for protein precipitation. After centrifugation the supernatant was hydrolyzed (300 μL 1.5 M KOH (75/25, MeOH/water, v/v)), immediately neutralized with 55 μL 50% acetic acid, diluted with 2 mL sodium phosphate buffer (pH 5.5) and extracted by SPE.

The extracts were analyzed in scheduled selected reaction monitoring mode following negative electrospray ionization by LC-MS/MS (QTRAP 6500, Sciex, Darmstadt, Germany).^{38,41}

In parallel to the samples aliquots of pooled human quality control plasma (QC) were extracted using the same sample preparation procedure for free ($n = 6$) and total oxylipins ($n = 7$), respectively.

2.4 Data analysis

Oxylipins were quantified based on the analyte to corresponding IS area ratio using external calibration with linear least squares regression ($1/x^2$ weighting) as described.³⁸

In order to evaluate the influence of storage or transport of blood on oxylipin levels in plasma and serum % differences *vs.* t_0 (immediate sample processing) were calculated for each time point (t_x) for each individual using the following formula: $100 \times (\text{conc}_{t_x} - \text{conc}_{t_0})/\text{conc}_{t_0}$. The relevance of change in the analyte concentration was evaluated by comparison with the acceptable change limit (ACL) calculated using $\text{ACL} = 2.77 \times \text{RSD}_{\text{QC}}$ according to DIN ISO 5725-6.⁴² The factor 2.77 is based on $1.96 \times \sqrt{2}$, where 1.96 is used to cover the 95% confidence interval for bi-directional changes and $\sqrt{2}$ is used as the difference of two values is compared (at t_x and t_0). The relative standard deviation (RSD) was based on the RSD of



Table 1 Levels of representative free and total oxylipins quantified in quality control plasma analyzed in parallel with the samples, their lower limit of quantification (LLOQ, representing the concentration with a signal to noise ratio >5 and an accuracy in the calibration curve within 80–120%), their relative standard deviation (RSD) and the acceptable change limit (ACL) calculated using $ACL = 2.77 \times RSD_{QC}$

Analyte	Free oxylipins				Total, <i>i.e.</i> free and esterified oxylipins			
	LLOQ [nM]	Mean \pm SD [nM]	RSD [%]	ACL	LLOQ [nM]	Mean \pm SD [nM]	RSD [%]	ACL
PGE ₂	0.01	0.03 \pm 0.004	17	48	^a			
TxB ₂	0.05	0.52 \pm 0.06	12	32	^a			
12-HHT	0.05	0.53 \pm 0.07	14	39	0.25	1.25 \pm 0.13	9	26
12-HETE	0.05	5.63 \pm 0.89	16	44	0.25	8.48 \pm 0.90	11	30
12-HEPE	0.06	1.51 \pm 0.28	18	51	0.31	1.14 \pm 0.10	9	25
14-HDHA	0.10	3.63 \pm 0.55	15	42	0.50	2.98 \pm 0.53	18	49
15-HETE	0.13	1.14 \pm 0.10	8	23	0.63	10.42 \pm 1.50	14	40
15-HEPE	0.06	0.20 \pm 0.03	14	39	0.31	1.05 \pm 0.15	14	39
17-HDHA	0.20	0.89 \pm 0.12	13	36	1.00	4.54 \pm 0.75	17	46
5-HETE	0.05	0.86 \pm 0.09	11	29	0.25	17.77 \pm 1.55	9	24
5-HEPE	0.05	0.26 \pm 0.03	13	36	0.25	2.69 \pm 0.16	6	16
4-HDHA	0.03	0.35 \pm 0.03	7	21	0.13	3.62 \pm 0.45	12	34
7-HDHA	0.05	0.11 \pm 0.02	21	58	0.50	2.47 \pm 0.39	16	43
14(15)-EpETrE	0.03	0.10 \pm 0.01	9	24	0.25	54.46 \pm 11.78	22	60
17(18)-EpETE	0.10	<LLOQ			0.50	5.11 \pm 0.88	17	48
19(20)-EpDPE	0.05	0.31 \pm 0.03	9	26	0.25	11.60 \pm 2.06	18	49
14,15-DiHETrE	0.01	0.64 \pm 0.04	6	16	0.05	1.53 \pm 0.16	11	29
17,18-DiHETE	0.03	0.55 \pm 0.06	11	31	0.13	0.80 \pm 0.07	9	25
19,20-DiHDPE	0.05	3.09 \pm 0.17	5	15	0.25	3.77 \pm 0.16	4	12
5(<i>R,S</i>)-5-F _{2t} -IsoP	0.05	0.11 \pm 0.01	10	28	0.25	0.47 \pm 0.05	11	31
11-HETE	0.05	0.31 \pm 0.02	7	20	0.25	6.42 \pm 0.74	11	32
9-HETE	0.25	<LLOQ			1.25	6.37 \pm 0.77	12	34
18-HEPE	0.10	0.42 \pm 0.02	4	10	0.50	1.30 \pm 0.15	12	33

^a PGE₂ and TxB₂ are degraded during alkaline hydrolysis.

quality control plasma samples ($n = 6-7$) analyzed in parallel with the samples (Table 1).

Median concentrations of representative oxylipins with the interquartile range (25% percentil, 75% percentil) are given in the ESI (Tables S1 and S2†).

Data evaluation was carried out using GraphPad Prism version 6.01 for Windows (GraphPad Software, La Jolla California USA, <http://www.graphpad.com>).

3. Results

Oxylipins were analyzed by LC-MS/MS in plasma and serum from 6 individuals generated at four time points after blood collection in EDTA- and serum-tubes, respectively: (i) immediately; after storage at 4 °C for (ii) 4 hours or (iii) 24 hours; or (iv) after transfer *via* the pneumatic tube system (PTS) to the clinical chemistry laboratory (Fig. 1). At all conditions oxylipins were determined as free mediators (Fig. 2, ESI Fig. S3, S4, Table S1†) as well as after alkaline hydrolysis comprising both free and esterified oxylipins (Fig. 3, ESI Fig. S5, S6, Table S2†). In order to deduce effects of pre-analytical sample handling on the major enzymatic (COX, 5-LOX, 12-LOX, 15-LOX, CYP) and/or non-enzymatic formation pathways representative oxylipins were analyzed. In addition to the products formed from

the conversion of ARA (Fig. 2 and 3) also respective counterparts derived from EPA and DHA (ESI Fig. S3–S6†) were evaluated to confirm observed pathway specific effects.

3.1 Levels of oxylipins in plasma and serum after immediate processing

Comparing free oxylipin levels in plasma and serum after immediate processing (Fig. 2, ESI Fig. S3, S4†) revealed 2–3 orders of magnitude higher concentrations of COX-derived PGE₂, TxB₂ and 12-HHT in serum compared to plasma (21–125; 128–948; 68–500-fold, respectively). Similarly, also 12-LOX derived 12-HETE, 12-HEPE and 14-HDHA were massively increased (13–103; 2–73; 2–47-fold, respectively) in serum, while 15-LOX derived 15-HETE, 15-HEPE and 17-HDHA were elevated to a lesser extent (1–26; 1–6; 1–6-fold, respectively) and 5-LOX derived 5-HETE, 5-HEPE and 4-HDHA and 7-HDHA were unchanged or only slightly elevated (1–5; 1–2; 1–2-fold, respectively) in serum. In contrast, concentrations of CYP derived epoxy- and dihydroxy-PUFA were similar in plasma and serum consistent for ARA, EPA and DHA derived products. Levels of non-enzymatically formed ARA derived 5(*R,S*)-5-F_{2t}-IsoP were comparable in plasma and serum.

Regarding concentrations after immediate processing following alkaline hydrolysis (Fig. 3, ESI Fig. S5, S6†), levels of total oxylipins showed the same trend as their free counter-



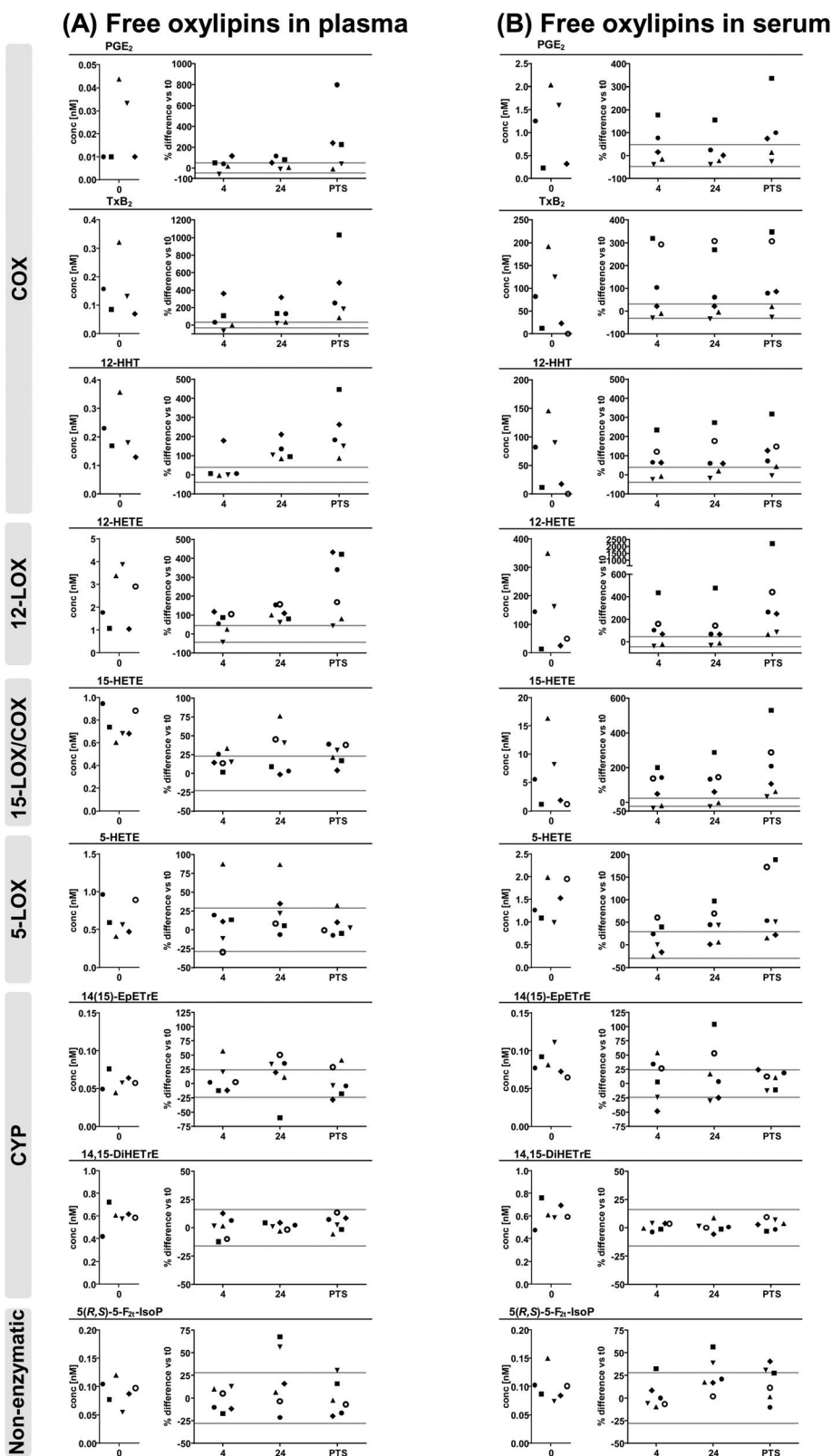


Fig. 2 ARA derived free oxylipins in (A) plasma and (B) serum. Shown are individual concentrations ($n = 6$) of selected oxylipins from major formation pathways at t_0 (immediate processing) and % difference vs. t_0 after storage for 4 hours and 24 hours at 4 °C and after pneumatic tube transport before centrifugation to generate plasma or serum. The different symbols represent samples from different individual human subjects. The grey lines indicate acceptable change limits calculated based on relative SD of quality control plasma (summarized in Table 1).



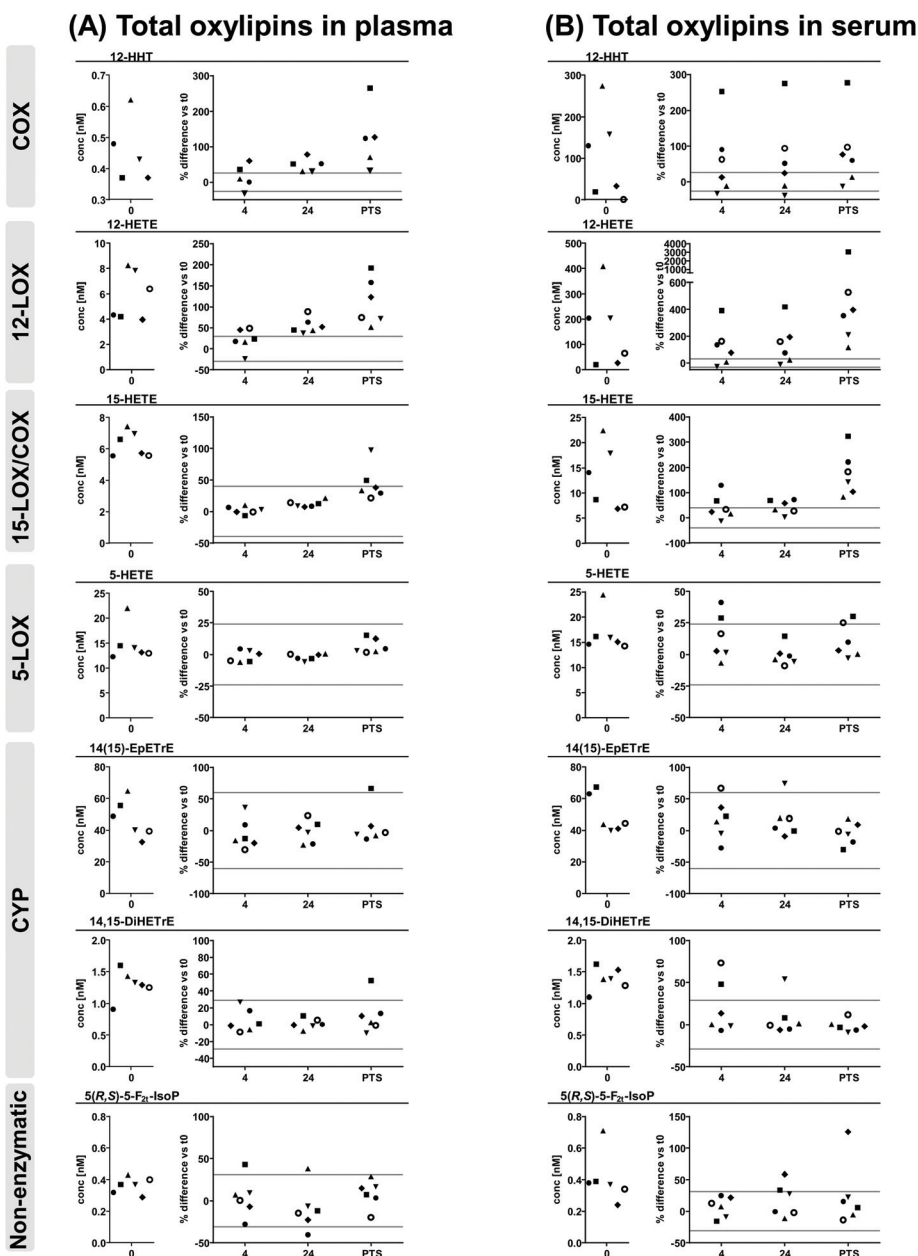


Fig. 3 ARA derived total oxylipins in (A) plasma and (B) serum. Shown are individual concentrations ($n = 6$) of selected oxylipins from major formation pathways at t_0 (immediate processing) and % difference vs. t_0 after storage for 4 hours and 24 hours at 4 °C and after pneumatic tube system transport before centrifugation to generate plasma or serum. The different symbols represent samples from different individual human subjects. The grey lines indicate acceptable change limits calculated based on relative SD of quality control plasma (summarized in Table 1).

parts when comparing plasma and serum: levels of epoxy- and dihydroxy-PUFA, as well as $5(R,S)$ - $5-F_{2t}$ -IsoP were comparable in plasma and serum. Serum levels of total 12-HHT were elevated to a similar extent (51-441-fold) compared to free 12-HHT. For hydroxy-PUFA differences between plasma and serum were moderate: levels of 12-LOX derived 12-HETE, 12-HEPE, 14-HDHA were clearly elevated (5-50; 2-14; 2-16-fold, respectively) while 15-LOX derived 15-HETE, 15-HEPE, 17-HDHA (1-3; 1-2; 1-3-fold, respectively) were same or only slightly higher in serum and levels of 5-LOX derived 5-HETE, 5-HEPE and

4-HDHA and 7-HDHA were similar in plasma and serum after hydrolysis.

Comparing levels of free and total oxylipins revealed similar concentrations for dihydroxy-PUFA while levels of hydroxy-PUFA, epoxy-PUFA and $5(R,S)$ - $5-F_{2t}$ -IsoP were massively higher after hydrolysis.

3.2 Analytical variability of oxylipins in plasma and serum

Stability of oxylipins in the differently stored and transported blood samples before processing to plasma and serum was



evaluated based on changes in the apparent oxylipin levels in comparison to immediate processing and the “acceptable change limit” (ACL). The ACL covers the analytical variance including sample preparation and is based on the relative standard deviation of quality control plasma samples analyzed in parallel with the samples with similar concentrations (Table 1). For free oxylipins the ACL was below 35% for most analytes, except for PGE₂ and 7-HDHA with concentrations near the LLOQ (48% and 58%, respectively) and for 12-LOX products (42–51%). Similarly, for total oxylipins the ACL was below 40% for most analytes, except epoxy-PUFA (48–60%) and DHA derived hydroxy-PUFA (43–49%).

3.3 Stability of free oxylipins in plasma and serum

Regarding changes of free oxylipins in plasma after storage or PTS of blood samples, levels of 5(*R,S*)-5-F_{2t}-IsoP, terminal dihydroxy-PUFA and epoxy-PUFA as well as 5-LOX products were stable at all investigated conditions with slight deviations for 5-LOX products in samples from a single individual and for epoxy-PUFA in samples stored 24 h at 4 °C before processing. Changes of PGE₂, TxB₂ and 12-HHT were within the ACL for most samples after 4 h storage at 4 °C, while in samples stored for 24 h levels were clearly increased and after PTS further elevated with high inter-individual variance. 12-LOX metabolites showed a similar pattern with massive increases after PTS. With respect to 15-LOX metabolites, changes of 15-HETE and 17-HDHA were within the ACL in 4 h stored samples, clearly higher in 24 h stored samples, but only slightly elevated in PTS samples, while interestingly changes of 15-HEPE were within the ACL at all investigated conditions.

In serum overall storage/transport-induced changes of free oxylipins were more pronounced. PGE₂, TxB₂ and 12-HHT showed a similar pattern in all stored and transported samples with high inter-individual variance being within the ACL for samples from 2–3 individuals, but massively higher for 2–4 individuals. For 12-LOX and 15-LOX metabolites changes were higher, though similar in 4 h and 24 h stored samples, but massively higher in PTS samples with high inter-individual variance. 5-LOX metabolites were within the ACL for most samples stored for 4 h, but exceeded the ACL in 24 h stored and PTS samples. While dihydroxy-PUFA were stable in all conditions, changes of epoxy-PUFA and 5(*R,S*)-5-F_{2t}-IsoP were within the ACL in ≥50% of samples stored 4 h and after PTS, but were slightly higher than the ACL in 24 h stored blood samples.

3.4 Stability of total oxylipins in plasma and serum

Similar to free oxylipins, storage/transport-induced lower changes of total oxylipins in plasma compared to serum. However, the overall impact of sample handling was less pronounced in total levels compared to free oxylipins. In plasma and serum for all conditions changes of total 5-LOX metabolites, dihydroxy-PUFA, epoxy-PUFA as well as 5(*R,S*)-5-F_{2t}-IsoP were within the respective ACL for ≥67% of the samples. 15-LOX-metabolites were stable in plasma of 4 h and 24 h stored samples, while in PTS samples slight increases were

observed being most pronounced for DHA derived 17-HDHA. Deviations in serum were higher, slightly exceeding the ACL in 4 h and 24 h stored samples while being massively elevated in PTS samples with high inter-individual variance. The strongest influence of pre-processing handling was observed for 12-LOX metabolites, being more pronounced in serum than in plasma. While changes of 12-LOX metabolites in plasma were within the ACL in 4 h stored samples and slightly elevated in 24 h stored samples, in serum they already exceeded the ACL in ≥67% of all 4 h and 24 h stored samples. Changes in PTS samples were clearly higher than the ACL for plasma and serum, being however massively higher in serum with higher inter-individual variance. For total 12-HHT the extent and pattern of changes was similar as for free 12-HHT.

4. Discussion

Targeted oxylipin metabolomics of clinical samples is increasingly becoming valuable in the evaluation of the disease state or for the discovery of disease biomarkers.⁵ However, blood sampling in clinical routine is often accompanied with uncontrolled transitory time intervals during collection and processing until further analysis and standardized handling of samples is hard to attain in the clinical setting. Efficient transport systems are established in large hospitals such as pneumatic tube system transport (PTS) to achieve fast sample delivery to the clinical chemistry laboratory. The influence of this “real life” blood sample handling has been previously described for hemolysis and clinical chemistry parameters,^{43,44} however, no information is available regarding its impact on the oxylipin pattern. Because of the oxidation-prone structure of oxylipins as well as the residual enzymatic activity in blood samples related to PUFA converting enzymes in blood cells, artificial formation and degradation of oxylipins during the pre-analytical workflow including collection, transport, processing, storage and preparation of samples cannot be excluded and may impact reliable interpretation of the analyzed oxylipin pattern. Therefore, we evaluated in the present study the effect of storage of whole blood samples at 4 °C for 4 h and 24 h as well as of the transport *via* the PTS prior centrifugation on the levels of a comprehensive set of free and total oxylipins in EDTA-plasma and serum covering oxylipins from all major formation pathways.

4.1 Serum generation is associated with massive increase of free and total platelet derived oxylipins

In direct comparison of free oxylipin levels in directly processed plasma and serum we observed a massive increase of COX and 12-LOX derived products by 1–3 orders of magnitude in serum. Levels of 15-LOX products were also elevated however to a lesser extent, while 5-LOX derived metabolites were only slightly higher in serum, and CYP derived epoxy- and dihydroxy-PUFA were similar in plasma and serum. This is consistent with previous studies observing massive higher levels of free TxB₂, 12-HHT and 12-HETE in serum compared



to plasma.^{34,35,45} The observed increase in these eicosanoids is attributable to the intrinsic activation of the clotting cascade triggered by the contact of the contact system factor FXII which circulates in the blood with the negatively charged surfaces in the vacutainer used to generate serum during blood collection.⁴⁶ Activation of this protease cascade ultimately leads to the activation of platelets and their main PUFA converting enzymes COX-1 and 12-LOX and subsequently to the formation of TxA₂, 12-HHT (*via* COX-1) and 12-HETE (12-LOX) during coagulation.^{47,48} The observed increase in 15-HETE could also be besides synthesis *via* 12/15-LOX which is under homeostatic conditions predominantly present in eosinophils⁴⁹ related to activated platelets *via* COX-1 which have been shown to produce 15-HETE (predominantly the *S*-enantiomer) and 11-HETE.⁵⁰ Consistently, 11-HETE showed a similar pattern (ESI, Fig. S7†). The slight elevation of 5-HETE levels in serum is also consistent with previous reports^{34,35} and the prevailing proportion of 5(*S*)-HETE³⁵ suggests contribution of enzymatic formation *via* 5-LOX expressed in various leukocytes⁵¹ which have been implicated in the regulation of thrombosis.⁵²

Respective hydroxy-PUFA derived from EPA and DHA showed the same pattern as their ARA derived counterparts supporting the contribution of these enzymatic pathways to their formation during serum generation (ESI Fig. S3–S6†). However, these metabolites were elevated to a lesser extent reflecting the low levels of EPA and DHA in blood competing with ARA for their enzymatic conversion as human 12/15-LOX and 12-LOX enzymes have been shown to prefer DHA and EPA over ARA.⁵³ The observation that levels of non-enzymatically formed 5(*R,S*)-5-F_{2t}-IsoP were similar in plasma and serum suggests that autoxidative processes do not play a major role in freshly prepared serum. Similar only marginal alterations were seen for 9-HETE (ESI, Fig. S7†), which is discussed as autoxidation product.

The major portion of hydroxy- and epoxy-PUFA, as well as 5(*R,S*)-5-F_{2t}-IsoP was found esterified in plasma and serum, because massive higher concentrations were observed after alkaline hydrolysis, consistent with earlier reports.^{20–22} Dihydroxy-PUFA were only present non-esterified with same apparent concentrations for free and total oxylipins. Since under alkaline conditions thromboxanes as well as β-hydroxyketo-prostanoids, *e.g.* PGE₂ and PGD₂, are degraded,⁵⁴ we used formation of 12-HHT as a surrogate for COX activity.⁴⁷ The levels of 12-HHT were similar with and without hydrolysis yet massively higher in serum. Thus, based on 12-HHT also analysis of total oxylipins reflects increased COX activity due to platelet activation during serum generation.

Serum generation was also accompanied by an increase in total hydroxy-PUFA levels which was however less pronounced compared to the respective free hydroxy-PUFA. Even though it has been shown that eosinophilic 12/15-LOX directly form esterified 15-HETE in phospholipids⁴⁹ and platelet 12-LOX derived hydroxy-PUFA are readily esterified contributing to the esterified pool,⁵⁵ only a minor increase of 12- and 15-HETE (and respective EPA and DHA products) was observed in total

oxylipins in comparison to their free levels. Esterified oxylipins in the cell free fraction of blood (*i.e.* serum and plasma) are thus hardly influenced by the activation of the coagulation cascade.

4.2 Plasma oxylipin profile is more stable than serum and total oxylipins are more stable than free oxylipins

The extended transitory storage of whole blood prior further processing to plasma or serum can cause formation and degradation of several oxylipins due to prolonged *ex vivo* contact with blood cells, *i.e.* erythrocytes, leukocytes or platelets, exhibiting enzymatic activity *versus* PUFA and oxylipins. In order to evaluate the impact of the transitory storage or PTS transport we used the ACL based on the methodological RSD obtained from quality control plasma samples analyzed in parallel⁴² which was in a similar range as previously reported for both, free^{34,56} and total oxylipins.⁴⁰

Free oxylipins in plasma from whole blood stored at 4 °C for 4 h remained almost stable (≥67% of the samples were within the ACL) with exception of samples from a few individuals showing higher deviations for 12-LOX and COX-1 derived products. After 24 h at 4 °C besides considerable increase in platelet-derived oxylipins also 15-LOX products were clearly increased. Though these results are consistent with a previous study reporting that free oxylipins in EDTA-whole blood are stable up to 2 h at 4 °C (ref. 34) or on wet ice,³⁷ another study showed a clear decrease of some prostanoids (PGE₂, PGF_{2α}), hydroxy-PUFA (11- and 15-HETE) and epoxy-PUFA (14(15)- and 11(12)-EpETrE) in EDTA-whole blood already after 1 h on ice.¹⁶

In contrast to plasma, free oxylipins in serum of stored clotted whole blood were largely unstable. Especially platelet-derived (COX and 12-LOX) as well as 15-LOX products showed a strong increase with high inter-individual variance similar for 4 h and 24 h at 4 °C. 5-LOX derived products were stronger elevated after longer storage (24 h *vs.* 4 h). Consistently, La Frano *et al.* reported that a “freezing delay” of clotted whole blood dramatically elevated hydroxy-PUFA attributed to ongoing enzymatic processes in cooled whole blood.⁵⁷

Apparent total oxylipin patterns were considerably more stable towards transitory storage of whole blood. However, the observed changes revealed a similar pattern as for free oxylipins: total plasma oxylipins were stable for 4 h at 4 °C and showed only elevation of platelet derived oxylipins after 24 h. In serum similarly to free oxylipins platelet derived oxylipins were massively increased after 4 h and 24 h, however increase in 15-LOX products was less pronounced and absent for 5-LOX products. These results suggest that transitory storage at 4 °C without removal of the blood cells or/and the blood clot led to enzymatic activity resulting from *ex vivo* activation of platelets. This leads to considerable artificial *ex vivo* formation of COX and 12-LOX products. While in plasma this can be ascribed to continuing enzymatic conversion related to the duration of storage, the high inter-individual variances in platelet-derived metabolites in serum which are similar at 4 h and 24 h indicate that these changes result rather from individual differences in the platelets and enzymatic activity of the blood



coagulation cascade. One should note, that under all conditions the levels of free as well as total oxylipins of CYP derived dihydroxy-PUFA were stable and free levels of epoxy-PUFA showed only slight increases after 24 h. Moreover, the almost unchanged 5(*R,S*)-5-F_{2t}-IsoP and 9-HETE levels indicate that only minor autoxidation takes place during the delay in sample processing.

4.3 Non-controlled blood transport amplifies formation of platelet derived (COX-1, 12-LOX) oxylipins

Automated pneumatic tube transport of blood caused in all samples a massive increase in 12-LOX and COX products with high inter-individual variances. While 15-LOX metabolites were only slightly and 5-LOX products barely affected in plasma, in serum PTS transport also led to a clear elevation of these hydroxy-PUFA. Again, these changes were more pronounced for free oxylipins. Consistent with previous studies observing decreased clotting time after PTS transport^{58,59} these observations suggest that during PTS transport platelets might be activated, *e.g.* due to shear stress or hemolysis induced by physical forces (shaking, rapid acceleration). Even though the used PTS has not been evaluated with regard to its impact on platelet function and different PTS might have varying effects, the observed increase in platelet derived COX and 12-LOX metabolites after PTS is likely attributable to enhanced platelet activation during PTS. Consistently, the observed higher variation of plasma LDH levels in samples undergoing PTS transport (RSD of relative difference 21%) compared to stored samples (RSD of relative difference 8–11%) indicates that PTS slightly induces hemolysis without being visibly noticeable (ESI, Fig. S2†).

5. Conclusion

In the present study we investigated the impact of transitory storage as well as PTS transport of whole blood samples on the pattern of free and total oxylipins in plasma and serum with the aim to evaluate if free or total oxylipins are more stable in plasma or serum after whole blood handling in a clinical setting. Based on parallel analysis of oxylipins derived from ARA, EPA and DHA from all major formation pathways including COX, LOX, CYP as well as non-enzymatic conversion we could show: (1.) free oxylipins in plasma are stable up to 4 h at 4 °C and prolonged storage as well as sample transport led to increased levels of 12-LOX and COX products. (2.) The total oxylipin pattern in plasma and serum is less affected by transitory storage and transport. (3.) Blood coagulation, *i.e.* serum generation, leads to massively higher levels of free and total COX-1 and 12-LOX derived oxylipins due to *ex vivo* platelet activation. (4.) Serum samples showed higher storage and transport induced variability and inter-individual differences were more pronounced. Thus, with respect to clinical studies – where blood sampling cannot be tightly controlled – total plasma oxylipins seem to be the best analytical marker for the blood oxylipin pattern. While great caution with respect to arti-

fact formation in interpretation of 12-LOX and COX metabolites is required, total levels of 5-LOX, CYP as well as the autoxidation product 5(*R,S*)-5-F_{2t}-IsoP are stable with respect to blood handling conditions.

Conflicts of interest

There are no conflicts to declare.

Acknowledgements

Our work is supported by the Fonds der Chemischen Industrie to KR, the German Research Foundation (DFG, Grant SCHE 1801) and by a grant from the Federal Ministry of Education and Research (BMBF-No: 03INT502AB) to FG.

References

- 1 M. Gabbs, S. Leng, J. G. Devassy, M. Monirujjaman and H. M. Aukema, *Adv. Nutr.*, 2015, **6**, 513–540.
- 2 A. Konkel and W.-H. Schunck, *Biochim. Biophys. Acta*, 2011, **1814**, 210–222.
- 3 J. Yeung, M. Hawley and M. Holinstat, *J. Mol. Med.*, 2017, **95**, 575–588.
- 4 E. A. Dennis and P. C. Norris, *Nat. Rev. Immunol.*, 2015, **15**, 511–523.
- 5 C. Gladine, A. I. Ostermann, J. W. Newman and N. H. Schebb, *Free Radical Biol. Med.*, 2019, **144**, 72–89.
- 6 M. W. Buczynski, D. S. Dumlao and E. A. Dennis, *J. Lipid Res.*, 2009, **50**, 1015–1038.
- 7 G. L. Milne, Q. Dai and L. J. Roberts II, *Biochim. Biophys. Acta*, 2015, **1851**, 433–445.
- 8 H. Yin, L. Xu and N. A. Porter, *Chem. Rev.*, 2011, **111**, 5944–5972.
- 9 K. M. Rund, D. Heylmann, N. Seiwert, S. Wecklein, C. Oger, J.-M. Galano, T. Durand, R. Chen, F. Gueler, J. Fahrner, J. Bornhorst and N. H. Schebb, *Prostaglandins Other Lipid Mediators*, 2019, **144**, 106334.
- 10 H. Jiang, J. C. McGiff, J. Quilley, D. Sacerdoti, L. M. Reddy, J. R. Falck, F. Zhang, K. M. Lerea and P. Y. Wong, *J. Biol. Chem.*, 2004, **279**, 36412–36418.
- 11 V. Capra, M. Bäck, S. S. Barbieri, M. Camera, E. Tremoli and G. E. Rovati, *Med. Res. Rev.*, 2013, **33**, 364–438.
- 12 J. P. Hardwick, K. Eckman, Y. K. Lee, M. A. Abdelmegeed, A. Esterle, W. M. Chilian, J. Y. Chiang and B. J. Song, *Adv. Pharmacol.*, 2013, **66**, 157–266.
- 13 K. Brune and P. Patrignani, *J. Pain Res.*, 2015, **8**, 105–118.
- 14 M. Crescente, L. Menke, M. V. Chan, P. C. Armstrong and T. D. Warner, *Br. J. Pharmacol.*, 2019, **176**, 988–999.
- 15 J. Song, X. Liu, T. S. Rao, L. Chang, M. J. Meehan, J. M. Blevitt, J. Wu, P. C. Dorrestein and M. E. Milla, *J. Lipid Res.*, 2015, **56**, 1492–1500.
- 16 I. Willenberg, A. I. Ostermann and N. H. Schebb, *Anal. Bioanal. Chem.*, 2015, **407**, 2675–2683.



- 17 A. I. Ostermann and N. H. Schebb, *Food Funct.*, 2017, **8**, 2355–2367.
- 18 B. A. Ek-Von Mentzer, F. Zhang and J. A. Hamilton, *J. Biol. Chem.*, 2001, **276**, 15575–15580.
- 19 T. G. Brock, *Lipids*, 2008, **43**, 161–169.
- 20 G. C. Shearer and J. W. Newman, *Prostaglandins, Leukotrienes Essent. Fatty Acids*, 2008, **79**, 215–222.
- 21 N. H. Schebb, A. I. Ostermann, J. Yang, B. D. Hammock, A. Hahn and J. P. Schuchardt, *Prostaglandins Other Lipid Mediators*, 2014, **113–115**, 21–29.
- 22 J. D. Morrow, J. A. Awad, H. J. Boss, I. A. Blair and L. J. Roberts II, *Proc. Natl. Acad. Sci. U. S. A.*, 1992, **89**, 10721–10725.
- 23 S. Pace, L. Sautebin and O. Werz, *Biochem. Pharmacol.*, 2017, **145**, 1–11.
- 24 S. P. B. Caligiuri, M. Parikh, A. Stamenkovic, G. N. Pierce and H. M. Aukema, *Am. J. Physiol.: Heart Circ. Physiol.*, 2017, **313**, H903–H918.
- 25 R. M. Giordano, J. W. Newman, T. L. Pedersen, M. I. Ramos and C. L. Stebbins, *Int. J. Sport Nutr. Exercise Metab.*, 2011, **21**, 471–479.
- 26 X. Capo, M. Martorell, A. Sureda, J. A. Tur and A. Pons, *J. Int. Soc. Sports Nutr.*, 2016, **13**, 16.
- 27 A. M. Zivkovic, J. Yang, K. Georgi, C. Hegedus, M. L. Nording, A. O'Sullivan, J. B. German, R. J. Hogg, R. H. Weiss, C. Bay and B. D. Hammock, *Metabolomics*, 2012, **8**, 1102–1113.
- 28 H. Gottschall, C. Schmöcker, D. Hartmann, N. Rohwer, K. Rund, L. Kutzner, F. Nolte, A. I. Ostermann, N. H. Schebb and K. H. Weylandt, *J. Lipid Res.*, 2018, **59**, 864–871.
- 29 D. D. Schramm, J. F. Wang, R. R. Holt, J. L. Ensunsa, J. L. Gonsalves, S. A. Lazarus, H. H. Schmitz, J. B. German and C. L. Keen, *Am. J. Clin. Nutr.*, 2001, **73**, 36–40.
- 30 C. C. Berthelot, S. G. Kamita, R. Sacchi, J. Yang, M. L. Nording, K. Georgi, C. Hegedus Karbowski, J. B. German, R. H. Weiss, R. J. Hogg, B. D. Hammock and A. M. Zivkovic, *PLoS One*, 2015, **10**, e0144996.
- 31 S. Ross, J. Eikelboom, S. S. Anand, N. Eriksson, H. C. Gerstein, S. Mehta, S. J. Connolly, L. Rose, P. M. Ridker, L. Wallentin, D. I. Chasman, S. Yusuf and G. Pare, *Eur. Heart J.*, 2014, **35**, 2242–2248.
- 32 C. B. Stephensen, P. Armstrong, J. W. Newman, T. L. Pedersen, J. Legault, G. U. Schuster, D. Kelley, S. Vikman, J. Hartiala, R. Nassir, M. F. Seldin and H. Allayee, *J. Lipid Res.*, 2011, **52**, 991–1003.
- 33 B. N. Zordoky and A. O. El-Kadi, *Pharmacol. Ther.*, 2010, **125**, 446–463.
- 34 J. Dorow, S. Becker, L. Kortz, J. Thiery, S. Hauschildt and U. Ceglarek, *Biopreserv. Biobanking*, 2016, **14**, 107–113.
- 35 L. L. Mazaleuskaya, A. Salamatipour, D. Sarantopoulou, L. Weng, G. A. FitzGerald, I. A. Blair and C. Mesaros, *J. Lipid Res.*, 2018, **59**, 564–575.
- 36 H. S. Jonasdottir, H. Brouwers, R. E. M. Toes, A. Ioan-Facsinay and M. Giera, *Biochim. Biophys. Acta*, 2018, **1863**, 1511–1522.
- 37 C. E. Ramsden, Z.-X. Yuan, M. S. Horowitz, D. Zamora, S. F. Majchrzak-Hong, B. S. Muhlhausler, A. Y. Taha, M. Makrides and R. A. Gibson, *Prostaglandins, Leukotrienes Essent. Fatty Acids*, 2019, **150**, 31–37.
- 38 K. M. Rund, A. I. Ostermann, L. Kutzner, J.-M. Galano, C. Oger, C. Vigor, S. Wecklein, N. Seiwert, T. Durand and N. H. Schebb, *Anal. Chim. Acta*, 2018, **1037**, 63–74.
- 39 T. Greupner, L. Kutzner, F. Nolte, A. Strangmann, H. Kohrs, A. Hahn, N. H. Schebb and J. P. Schuchardt, *Food Funct.*, 2018, **9**, 1587–1600.
- 40 A. I. Ostermann, E. Koch, K. M. Rund, L. Kutzner, M. Mainka and N. H. Schebb, *Prostaglandins Other Lipid Mediators*, 2019, **146**, 106384.
- 41 L. Kutzner, K. M. Rund, A. I. Ostermann, N. M. Hartung, J.-M. Galano, L. Balas, T. Durand, M. S. Balzer, S. David and N. H. Schebb, *Front. Pharmacol.*, 2019, **10**, 169.
- 42 *DIN ISO 5725-6:2002-08, Accuracy (trueness and precision) of measurement methods and results – Part 6: Use in practice of accuracy values (ISO 5725-6:1994 including Technical Corrigendum 1:2001)*, Prepared by the Technical Committee ISO/TC69, Applications of statistical methods, 2002, DOI: 10.31030/9254896.
- 43 R. Sodi, S. M. Darn and A. Stott, *Ann. Clin. Biochem.*, 2004, **41**, 237–240.
- 44 J. Koessler, A. L. Kobsar, K. Brunner, H. Stolz, B. Dossler, U. Walter and U. Steigerwald, *Clin. Chem. Lab. Med.*, 2011, **49**, 1379–1382.
- 45 M. Ishikawa, Y. Tajima, M. Murayama, Y. Senoo, K. Maekawa and Y. Saito, *Biol. Pharm. Bull.*, 2013, **36**, 682–685.
- 46 C. Maas, C. Oschatz and T. Renné, *Semin. Thromb. Hemostasis*, 2011, **37**, 375–381.
- 47 T. Matsunobu, T. Okuno, C. Yokoyama and T. Yokomizo, *J. Lipid Res.*, 2013, **54**, 2979–2987.
- 48 V. B. O'Donnell, R. C. Murphy and S. P. Watson, *Circ. Res.*, 2014, **114**, 1185–1203.
- 49 S. Uderhardt, J. A. Ackermann, T. Fillep, V. J. Hammond, J. Willeit, P. Santer, M. Mayr, M. Biburger, M. Miller, K. R. Zellner, K. Stark, A. Zarbock, J. Rossaint, I. Schubert, D. Mielenz, B. Dietel, D. Raaz-Schrauder, C. Ay, T. Gremmel, J. Thaler, C. Heim, M. Herrmann, P. W. Collins, G. Schabbauer, N. Mackman, D. Voehringer, J. L. Nadler, J. J. Lee, S. Massberg, M. Rauh, S. Kiechl, G. Schett, V. B. O'Donnell and G. Krönke, *J. Exp. Med.*, 2017, **214**, 2121–2138.
- 50 F. Rauzi, N. S. Kirkby, M. L. Edin, J. Whiteford, D. C. Zeldin, J. A. Mitchell and T. D. Warner, *FASEB J.*, 2016, **30**, 4256–4266.
- 51 J. Z. Haeggstrom and C. D. Funk, *Chem. Rev.*, 2011, **111**, 5866–5898.
- 52 L. L. Swystun and P. C. Liaw, *Blood*, 2016, **128**, 753–762.
- 53 L. Kutzner, K. Goloshchapova, D. Heydeck, S. Stehling, H. Kuhn and N. H. Schebb, *Biochim. Biophys. Acta*, 2017, **1862**, 666–675.



- 54 C. Gladine, J. W. Newman, T. Durand, T. L. Pedersen, J.-M. Galano, C. Demougeot, O. Berdeaux, E. Pujos-Guillot, A. Mazur and B. Comte, *PLoS One*, 2014, **9**, e89393.
- 55 V. J. Hammond and V. B. O'Donnell, *Biochim. Biophys. Acta*, 2012, **1818**, 2403–2412.
- 56 A. I. Ostermann, T. Greupner, L. Kutzner, N. M. Hartung, A. Hahn, J. P. Schuchardt and N. H. Schebb, *Anal. Methods*, 2018, **10**, 4935–4944.
- 57 M. R. La Frano, S. L. Carmichael, C. Ma, M. Hardley, T. Shen, R. Wong, L. Rosales, K. Borkowski, T. L. Pedersen, G. M. Shaw, D. K. Stevenson, O. Fiehn and J. W. Newman, *Metabolomics*, 2018, **14**, 151.
- 58 S. Thalén, I. Forsling, J. Eintrei, L. Söderblom and J. P. Antovic, *Thromb. Res.*, 2013, **132**, 77–80.
- 59 O. Wallin, J. Soderberg, K. Grankvist, P. A. Jonsson and J. Hultdin, *Clin. Chem. Lab. Med.*, 2008, **46**, 1443–1449.



Electronic Supplementary Information

Clinical blood sampling for oxylipin analysis

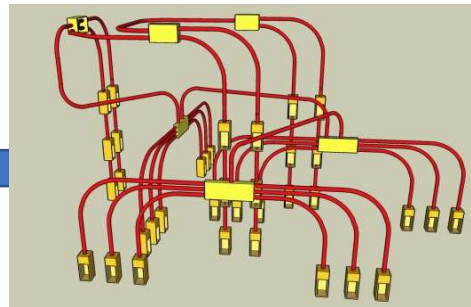
—

Effect of storage and pneumatic tube transport of blood on free
and total oxylipin profile in human plasma and serum

Katharina M. Rund, Fabian Nolte, Julian Doricic, Robert Greite,
Sebastian Schott, Ralf Lichtinghagen, Faikah Gueler,
Nils Helge Schebb



Transfer of samples
at the ward to the
pneumatic tube
system



Pneumatic tube
system transport



„24/7“ sample
processing at
clinical chemistry
laboratory

Fig. S1: Overview of the pneumatic tube system transport at the Hannover Medical School. Samples collected on the ward or the intensive care unit are packed in tubes and transferred via the pneumatic tube system transport which covers in total about 50 km pipe distance to the clinical chemistry laboratory where continuous (24/7) sample processing is carried out.

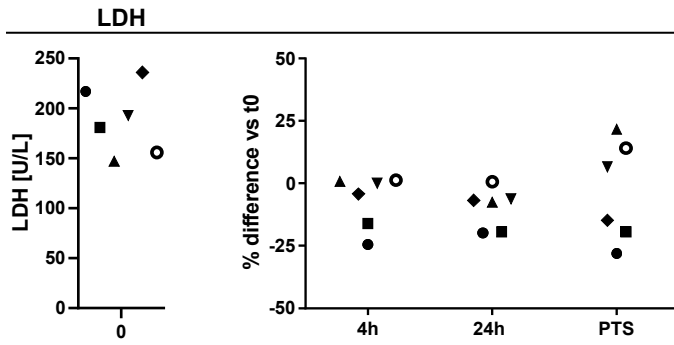


Fig. S2: Lactate dehydrogenase (LDH) in plasma. Shown are individual levels (n=6) of LDH at *t0* (immediate processing) and % difference vs. *t0* after storage for 4 h at 4 °C and 24 h at 4 °C or after pneumatic tube system transport before centrifugation to generate plasma. The different symbols represent samples from different individual human subjects.

LDH was analyzed by an Olympus analyzer (AU400) in an automated fashion according to the manufacturer's instruction.

(A) Free oxylipins in plasma

(B) Free oxylipins in serum

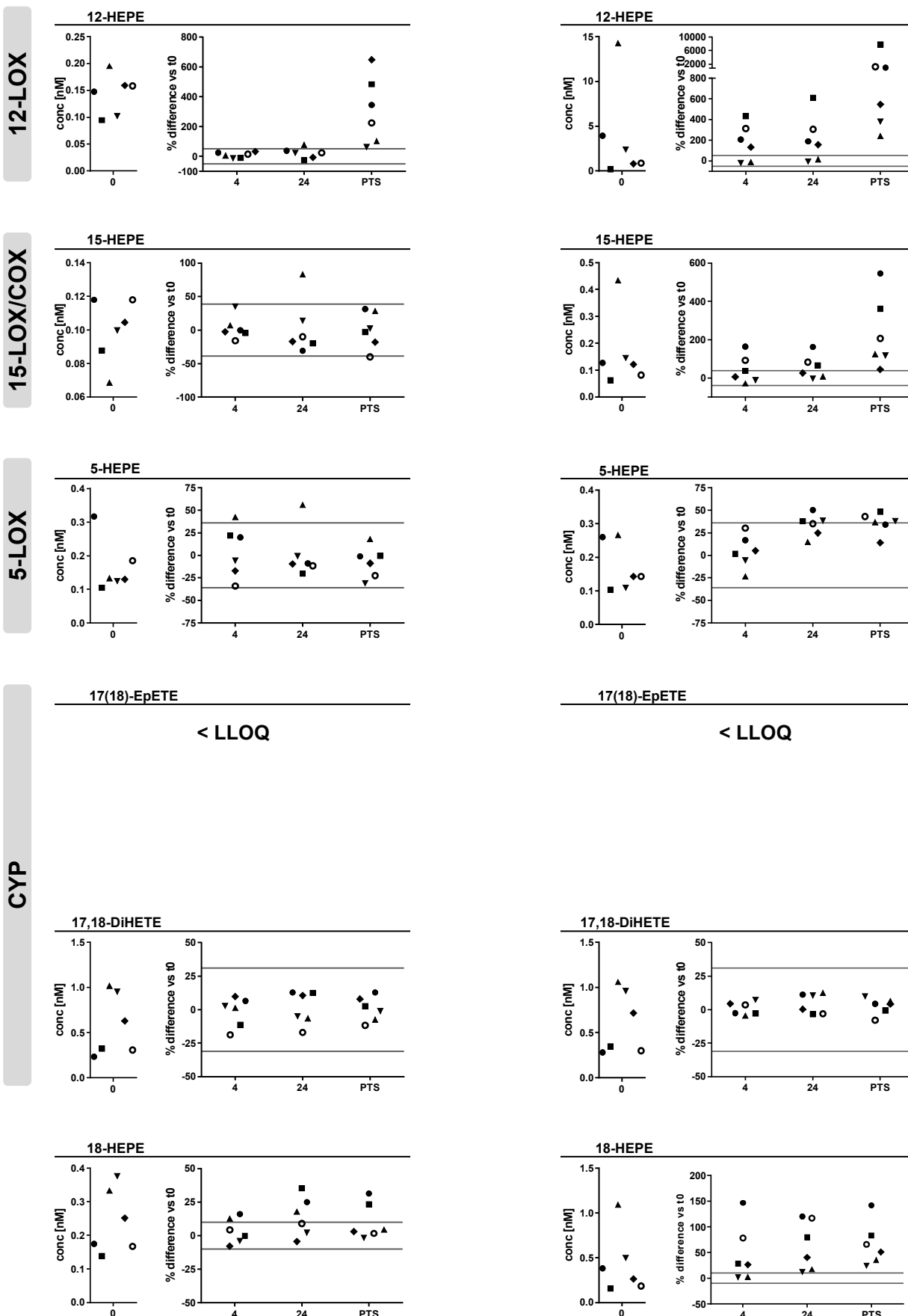


Fig. S3: EPA derived free oxylipins in (A) plasma and (B) serum. Shown are individual concentrations (n=6) of selected oxylipins from major formation pathways at *t*₀ (immediate processing) and % difference vs. *t*₀ after storage for 4 h at 4 °C and 24 h at 4 °C or after pneumatic tube system transport before centrifugation to generate plasma or serum. The different symbols represent samples from different individual human subjects. The grey lines indicate acceptable change limits calculated based on relative SD of quality control plasma (summarized in Tab.1).

(A) Free oxylipins in plasma

(B) Free oxylipins in serum

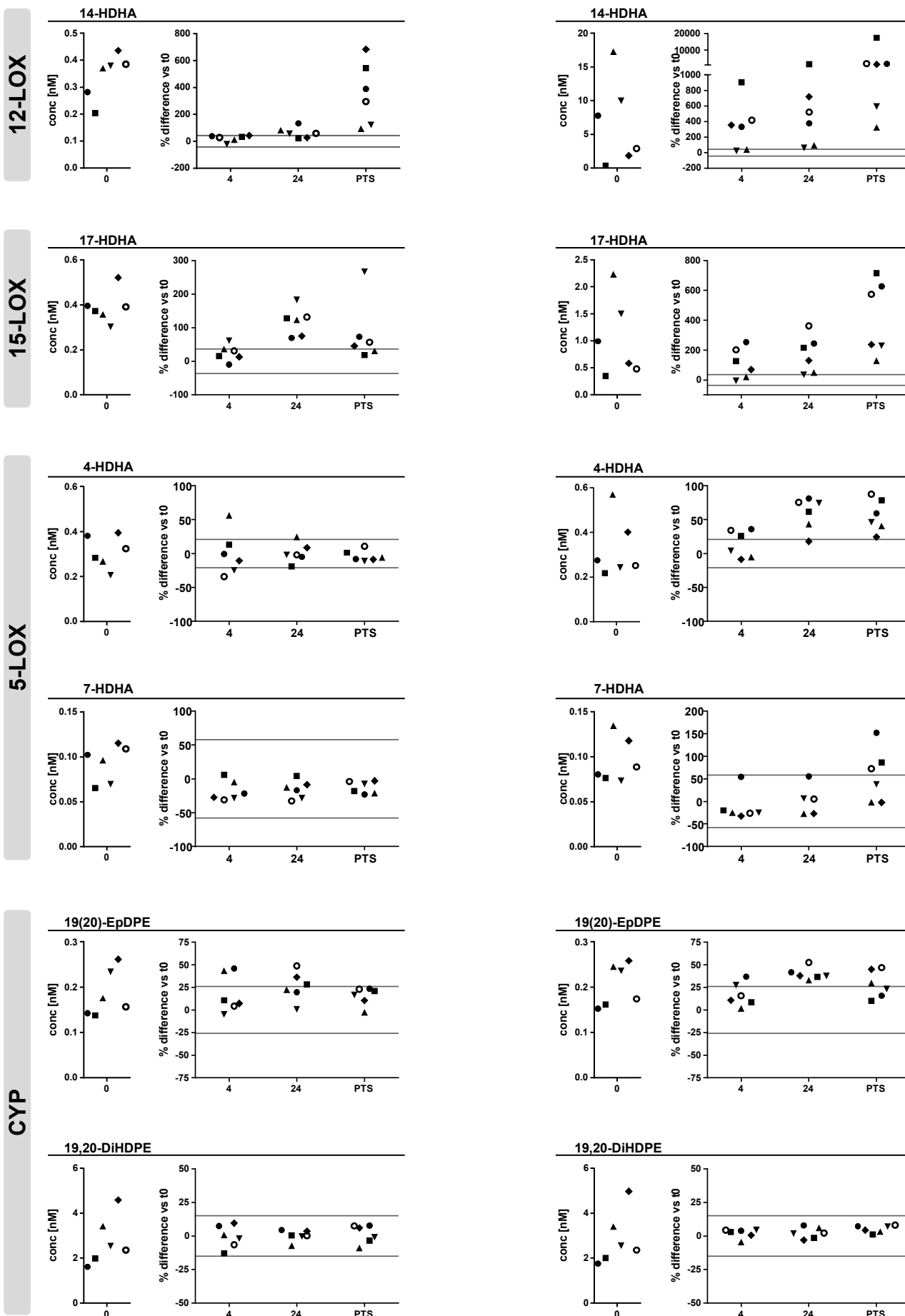


Fig. S4: DHA derived free oxylipins in (A) plasma and (B) serum. Shown are individual concentrations (n=6) of selected oxylipins from major formation pathways at *t*₀ (immediate processing) and % difference vs. *t*₀ after storage for 4 h at 4 °C and 24 h at 4 °C or after pneumatic tube system transport before centrifugation to generate plasma or serum. The different symbols represent samples from different individual human subjects. The grey lines indicate acceptable change limits calculated based on relative SD of quality control plasma (summarized in Tab.1).

(A) Total oxylipins in plasma

(B) Total oxylipins in serum

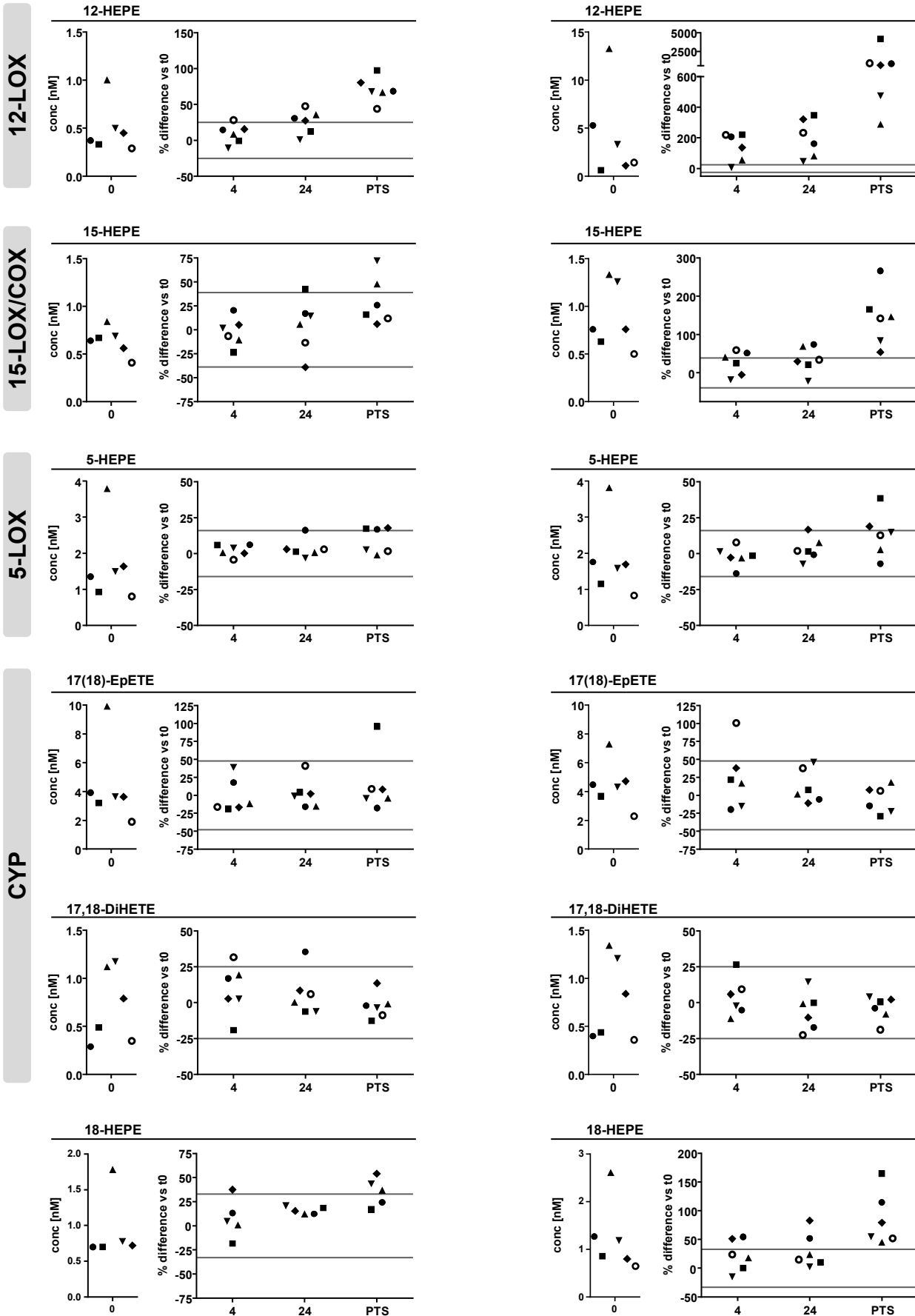
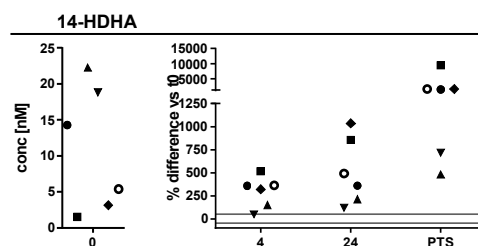
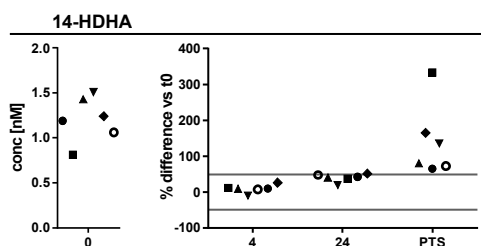


Fig. S5: EPA derived total (i.e. sum of free and esterified) oxylipins in (A) plasma and (B) serum. Shown are individual concentrations (n=6) of selected oxylipins from major formation pathways at t_0 (immediate processing) and % difference vs. t_0 after storage for 4 h at 4 °C and 24 h at 4 °C or after pneumatic tube system transport before centrifugation to generate plasma or serum. The different symbols represent samples from different individual human subjects. The grey lines indicate acceptable change limits calculated based on relative SD of quality control plasma (summarized in Tab.1).

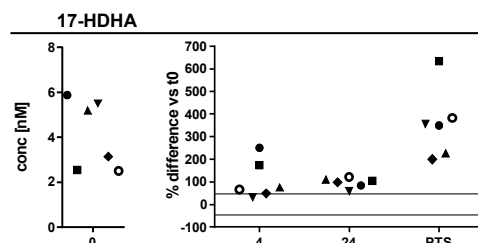
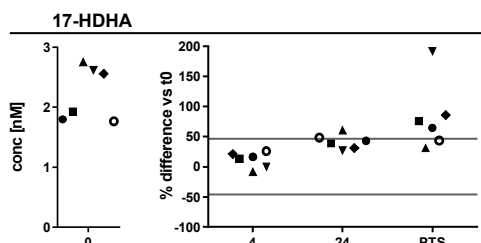
(A) Total oxylipins in plasma

(B) Total oxylipins in serum

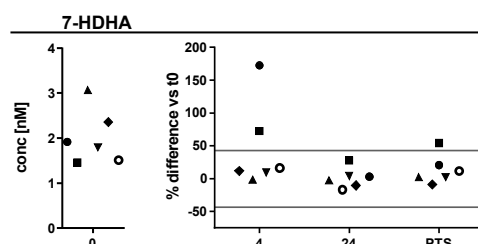
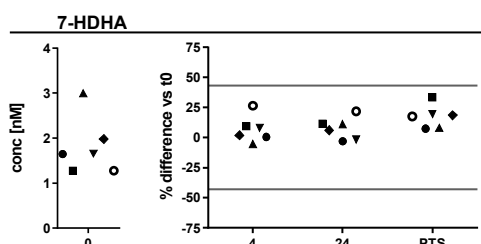
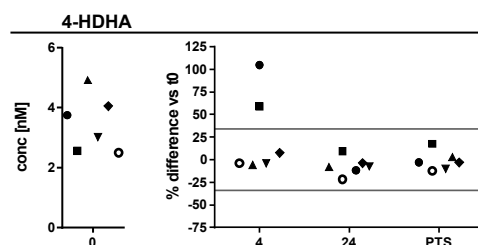
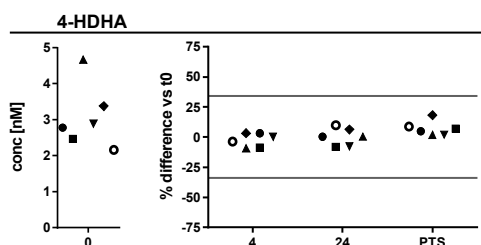
12-LOX



15-LOX



5-LOX



CYP

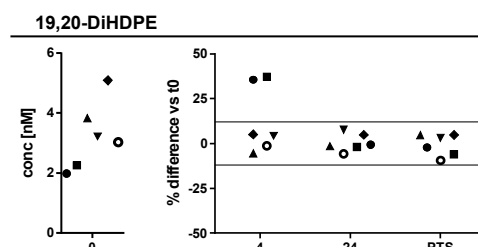
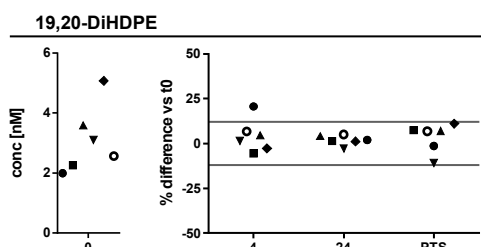
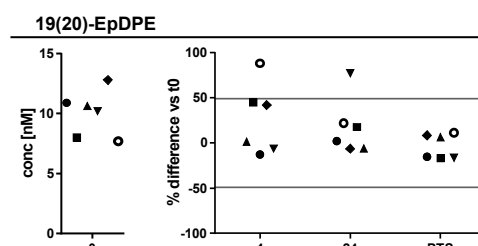
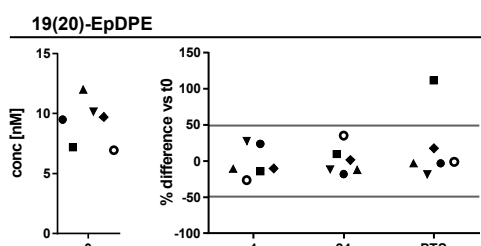
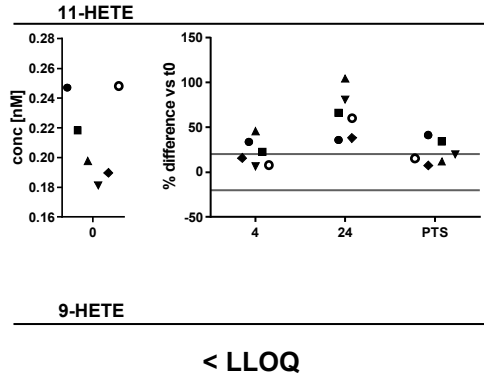
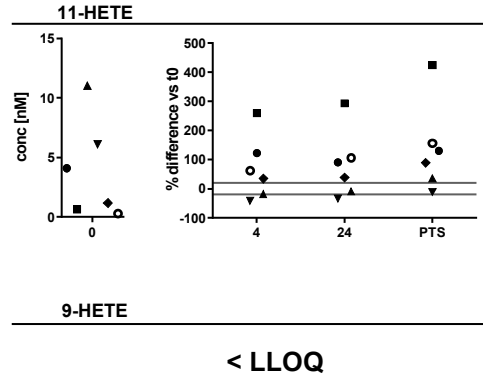


Fig. S6: DHA derived total oxylipins in (A) plasma and (B) serum. Shown are individual concentrations (n=6) of selected oxylipins from major formation pathways at *t*₀ (immediate processing) and % difference vs. *t*₀ after storage for 4 h at 4 °C and 24 h at 4 °C or after pneumatic tube system transport before centrifugation to generate plasma or serum. The different symbols represent samples from different individual human subjects. The grey lines indicate acceptable change limits calculated based on relative SD of quality control plasma (summarized in Tab.1).

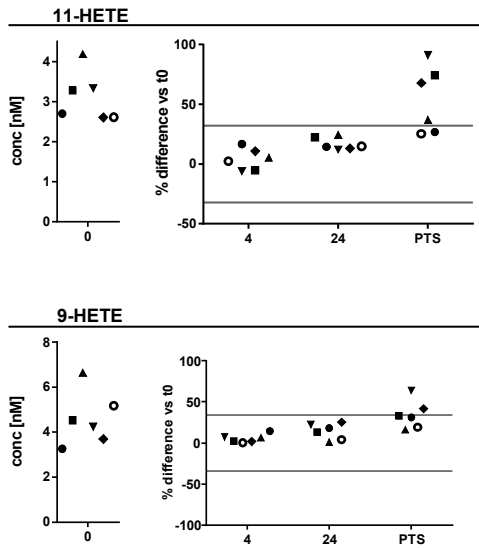
(A) Free oxylipins in plasma



(B) Free oxylipins in serum



(C) Total oxylipins in plasma



(D) Total oxylipins in serum

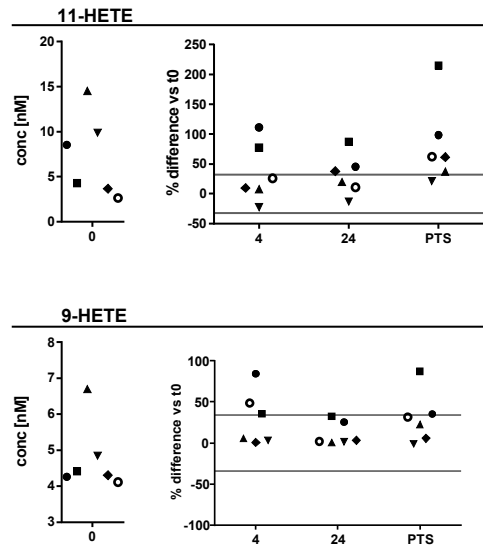


Fig. S7: ARA derived 11-HETE and 9-HETE in **(A+C)** plasma and **(B+D)** serum. Shown are individual concentrations (n=6) of **(A+B)** free or **(C+D)** total (comprising free and esterified) mediators at *t*₀ (immediate processing) and % difference vs. *t*₀ after storage for 4 h at 4 °C and 24 h at 4 °C or after pneumatic tube system transport before centrifugation to generate plasma or serum. The different symbols represent samples from different individual human subjects. The grey lines indicate acceptable change limits calculated based on relative SD of quality control plasma (summarized in Tab.1).

Tab. S1: Median concentrations with interquartil range (25% percentil, 75% percentil) [nM] of representative free oxylipins in plasma and serum following direct processing, after storage for 4 h or 24 h at 4 °C, or after pneumatic tube system transport (PTS) prior to centrifugation (n =6).

	plasma				serum			
	median (25% percentil, 75% percentil) [nM]				median (25% percentil, 75% percentil) [nM]			
	direct	4 h	24 h	PTS	direct	4 h	24 h	PTS
PGE ₂	0.010 (0.010, 0.039)	0.015 (0.014, 0.036)	0.022 (0.017, 0.038)	0.040 (0.033, 0.068)	1.3 (0.27, 1.8)	0.98 (0.50, 2.0)	0.98 (0.43, 1.6)	1.2 (0.78, 2.4)
TxB ₂	0.13 (0.078, 0.24)	0.21 (0.11, 0.32)	0.29 (0.18, 0.39)	0.56 (0.39, 0.78)	53 (9.1, 142)	69 (21, 168)	62 (21, 145)	73 (32, 167)
12-HHT	0.18 (0.15, 0.29)	0.24 (0.18, 0.35)	0.40 (0.35, 0.60)	0.65 (0.46, 0.79)	50 (8.6, 104)	53 (21, 133)	59 (20, 142)	67 (29, 158)
12-HETE	2.3 (1.1, 3.5)	2.5 (2.2, 4.7)	5.4 (2.1, 7.0)	5.8 (5.6, 7.8)	97 (22, 209)	114 (67, 273)	116 (74, 259)	312 (224, 538)
12-HEPE	0.15 (0.10, 0.17)	0.18 (0.087, 0.20)	0.17 (0.11, 0.24)	0.53 (0.34, 0.79)	1.6 (0.66, 6.5)	2.8 (1.7, 12)	2.9 (2.1, 13)	14 (10, 44)
14-HDHA	0.37 (0.26, 0.40)	0.40 (0.30, 0.52)	0.61 (0.48, 0.66)	1.3 (0.82, 2.0)	5.3 (1.5, 12)	14 (7.2, 26)	17 (13, 34)	68 (47, 88)
15-HETE	0.71 (0.66, 0.90)	0.80 (0.77, 1.0)	0.97 (0.77, 1.1)	0.88 (0.73, 1.2)	3.7 (1.2, 10)	4.5 (2.8, 13)	5.5 (2.9, 14)	9.1 (4.4, 19)
15-HEPE	0.10 (0.083, 0.12)	0.10 (0.081, 0.12)	0.097 (0.079, 0.12)	0.087 (0.082, 0.012)	0.12 (0.077, 0.22)	0.14 (0.12, 0.32)	0.17 (0.15, 0.37)	0.30 (0.23, 0.86)
17-HDHA	0.38 (0.34, 0.43)	0.49 (0.41, 0.53)	0.85 (0.76, 0.91)	0.65 (0.46, 0.85)	0.79 (0.45, 1.7)	1.4 (0.94, 2.9)	2.1 (1.2, 3.3)	4.1 (2.6, 5.6)
5-HETE	0.58 (0.46, 0.91)	0.65 (0.52, 1.86)	0.72 (0.63, 0.92)	0.57 (0.53, 0.89)	1.4 (1.1, 2.0)	1.5 (1.2, 2.0)	2.0 (1.5, 2.5)	2.1 (1.8, 3.7)
5-HEPE	0.13 (0.12, 0.22)	0.13 (0.12, 0.24)	0.14 (0.11, 0.23)	0.13 (0.10, 0.20)	0.14 (0.11, 0.26)	0.17 (0.11, 0.23)	0.19 (0.15, 0.33)	0.18 (0.15, 0.35)
4-HDHA	0.30 (0.25, 0.38)	0.34 (0.20, 0.39)	0.33 (0.22, 0.38)	0.32 (0.23, 0.36)	0.26 (0.24, 0.44)	0.35 (0.27, 0.42)	0.46 (0.36, 0.58)	0.46 (0.38, 0.57)
7-HDHA	0.099 (0.069, 0.11)	0.078 (0.064, 0.086)	0.078 (0.064, 0.090)	0.077 (0.062, 0.11)	0.084 (0.076, 0.12)	0.073 (0.060, 0.11)	0.090 (0.071, 0.10)	0.14 (0.11, 0.17)
14(15)-EpETrE	0.058 (0.048, 0.067)	0.063 (0.055, 0.070)	0.072 (0.045, 0.079)	0.059 (0.047, 0.065)	0.079 (0.071, 0.097)	0.090 (0.071, 0.11)	0.087 (0.072, 0.15)	0.090 (0.080, 0.093)
17(18)-EpETE	< LLOQ				< LLOQ			
19(20)-EpDPE	0.17 (0.14, 0.24)	0.22 (0.16, 0.26)	0.22 (0.18, 0.27)	0.18 (0.17, 0.28)	0.21 (0.16, 0.25)	0.23 (0.20, 0.29)	0.30 (0.20, 0.33)	0.27 (0.18, 0.33)
14,15-DiHETrE	0.59 (0.54, 0.64)	0.60 (0.51, 0.65)	0.58 (0.54, 0.67)	0.63 (0.54, 0.68)	0.60 (0.56, 0.71)	0.61 (0.57, 0.73)	0.62 (0.56, 0.72)	0.64 (0.59, 0.72)
17,18-DiHETE	0.48 (0.29, 0.97)	0.49 (0.25, 0.99)	0.53 (0.26, 0.92)	0.51 (0.27, 0.94)	0.53 (0.29, 0.99)	0.54 (0.30, 1.0)	0.59 (0.31, 1.1)	0.55 (0.29, 1.1)
19,20-DiHDPE	2.5 (1.9, 3.7)	2.4 (1.7, 3.8)	2.5 (1.9, 3.6)	2.5 (1.9, 3.5)	2.5 (1.9, 3.8)	2.6 (2.0, 3.7)	2.5 (1.9, 3.9)	2.7 (2.0, 3.9)
5(R,S)-5-F _{2t} -IsoP	0.092 (0.072, 0.11)	0.086 (0.064, 0.11)	0.097 (0.085, 0.13)	0.088 (0.071, 0.097)	0.094 (0.082, 0.11)	0.099 (0.086, 0.12)	0.11 (0.10, 0.16)	0.11 (0.096, 0.13)
9-HETE	< LLOQ				< LLOQ			
11-HETE	0.21 (0.19, 0.25)	0.27 (0.21, 0.30)	0.35 (0.31, 0.40)	0.25 (0.21, 0.31)	2.6 (0.56, 7.4)	3.0 (1.3, 9.1)	3.5 (1.4, 8.4)	4.4 (1.9, 11)
18-HEPE	0.21 (0.16, 0.34)	0.22 (0.17, 0.37)	0.23 (0.19, 0.39)	0.24 (0.17, 0.35)	0.32 (0.18, 0.65)	0.42 (0.29, 0.98)	0.48 (0.33, 0.95)	0.51 (0.30, 1.1)

Tab. S2: Median concentrations with interquartil range (25% percentil, 75% percentil) [nM] of representative total, i.e. sum of free and esterified oxylipins in plasma and serum following direct processing, after storage for 4 h or 24 h at 4 °C, or after pneumatic tube system transport (PTS) prior to centrifugation (n =6).

	plasma				serum			
	direct	median (25% percentil, 75% percentil) [nM]		PTS	direct	median (25% percentil, 75% percentil) [nM]		PTS
		4 h	24 h			4 h	24 h	
PGE ₂ *	-	-	-	-	-	-	-	-
TxB ₂ *	-	-	-	-	-	-	-	-
12-HHT	0.43 (0.37, 0.55)	0.51 (0.39, 0.64)	0.66 (0.56, 0.77)	1.1 (0.71, 1.2)	82 (14, 187)	87 (28, 243)	85 (31, 209)	105 (44, 234)
12-HETE	5.4 (4.1, 7.9)	5.9 (5.2, 9.5)	9.0 (6.1, 12)	12 (11, 13)	134 (25, 255)	159 (88, 451)	176 (100, 396)	644 (336, 892)
12-HEPE	0.41 (0.32, 0.63)	0.44 (0.36, 0.66)	0.50 (0.41, 0.77)	0.73 (0.57, 1.1)	2.4 (0.97, 7.3)	4.1 (2.4, 17)	4.8 (4.1, 16)	22 (13, 52)
14-HDHA	1.2 (1.0, 1.5)	1.3 (1.1, 1.6)	1.8 (1.5, 1.9)	2.9 (1.9, 3.5)	9.8 (2.7, 20)	26 (12, 58)	39 (27, 66)	138 (84, 174)
15-HETE	6.2 (5.6, 7.1)	6.1 (5.6, 7.4)	6.9 (6.1, 7.9)	8.9 (7.1, 11)	11 (7.1, 19)	15 (9.3, 27)	17 (10, 26)	39 (19, 44)
15-HEPE	0.65 (0.52, 0.73)	0.64 (0.48, 0.76)	0.77 (0.35, 0.90)	0.79 (0.56, 1.2)	0.76 (0.60, 1.3)	0.92 (0.78, 1.3)	0.99 (0.74, 1.6)	2.0 (1.2, 2.9)
17-HDHA	2.2 (1.8, 2.7)	2.4 (2.2, 2.7)	3.0 (2.6, 3.6)	3.5 (2.9, 5.5)	4.2 (2.5, 5.6)	7.1 (4.6, 12)	7.5 (5.5, 11)	18 (11, 25)
5-HETE	14 (13, 16)	13 (13, 16)	13 (13, 16)	15 (13, 18)	16 (15, 18)	19 (16, 21)	15 (14, 20)	17 (16, 22)
5-HEPE	1.4 (0.90, 2.2)	1.5 (0.93, 2.2)	1.5 (0.92, 2.2)	1.6 (1.0, 2.4)	1.6 (1.1, 2.3)	1.6 (1.1, 2.2)	1.6 (1.1, 2.5)	1.7 (1.4, 2.5)
4-HDHA	2.8 (2.4, 3.7)	2.9 (2.2, 3.7)	2.7 (2.3, 3.9)	2.9 (2.6, 4.2)	3.4 (2.5, 4.3)	4.2 (2.8, 5.4)	3.1 (2.6, 4.1)	3.3 (2.6, 4.2)
7-HDHA	1.7 (1.3, 2.2)	1.7 (1.6, 2.2)	1.6 (1.5, 2.4)	1.9 (1.7, 2.6)	1.9 (1.5, 2.5)	2.6 (1.9, 3.6)	1.9 (1.7, 2.3)	2.2 (1.8, 2.5)
14(15)-EpETrE	45 (38, 58)	51 (27, 55)	44 (37, 53)	40 (37, 68)	44 (41, 64)	53 (44, 76)	59 (49, 68)	46 (42, 52)
17(18)-EpETE	3.6 (2.9, 5.4)	3.8 (2.4, 6.0)	3.5 (3.1, 4.9)	3.7 (2.9, 7.1)	4.4 (3.3, 5.4)	4.5 (3.7, 7.0)	4.2 (3.8, 6.6)	3.6 (2.6, 6.0)
19(20)-EpDPE	9.6 (7.1, 11)	9.7 (5.9, 12)	9.2 (7.9, 10)	10 (8.0, 13)	10 (7.9, 11)	11 (9.6, 15)	11 (9.4, 14)	8.9 (8.1, 12)
14,15-DiHETrE	1.3 (1.2, 1.5)	1.3 (1.1, 1.6)	1.3 (1.2, 1.4)	1.3 (1.2, 1.7)	1.4 (1.2, 1.6)	1.6 (1.3, 2.3)	1.4 (1.2, 1.9)	1.4 (1.2, 1.5)
17,18-DiHETE	0.64 (0.34, 1.1)	0.64 (0.38, 1.2)	0.66 (0.39, 1.1)	0.66 (0.31, 1.1)	0.64 (0.39, 1.2)	0.72 (0.39, 1.2)	0.60 (0.32, 1.3)	0.65 (0.36, 1.2)
19,20-DiHDPE	2.8 (2.2, 4.0)	3.0 (2.3, 4.1)	2.9 (2.2, 4.1)	2.8 (2.3, 4.3)	3.1 (2.2, 4.1)	3.2 (2.9, 4.1)	3.2 (2.1, 4.2)	3.0 (2.1, 4.3)
5(R,S)-5-F ₂ -IsoP	0.37 (0.32, 0.41)	0.40 (0.26, 0.48)	0.33 (0.22, 0.41)	0.37 (0.33, 0.46)	0.37 (0.31, 0.47)	0.36 (0.32, 0.54)	0.42 (0.36, 0.54)	0.44 (0.38, 0.57)
9-HETE	4.4 (3.6, 5.5)	4.6 (3.8, 5.7)	5.2 (4.4, 5.7)	6.1 (5.0, 7.1)	4.4 (4.2, 5.3)	6.0 (4.8, 7.3)	5.1 (4.4, 6.1)	5.6 (4.7, 8.2)
11-HETE	3.0 (2.6, 3.6)	3.1 (2.8, 3.5)	3.4 (3.0, 4.3)	5.0 (3.4, 5.9)	6.4 (3.4, 11)	7.7 (3.8, 16)	8.3 (4.5, 14)	13 (5.5, 18)
18-HEPE	0.72 (0.70, 1.3)	0.82 (0.68, 1.4)	0.83 (0.81, 1.5)	1.1 (0.84, 1.8)	1.0 (0.76, 1.6)	1.1 (0.85, 2.2)	1.3 (0.90, 2.3)	2.1 (1.3, 3.0)

* PGE₂ and TxB₂ are degraded during alkaline hydrolysis